

Description

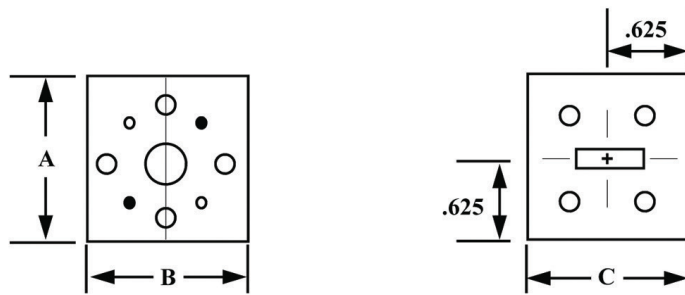
Mi-Wave's 281 Series Orthomode Transducer couples two orthogonal linearly polarized signals simultaneously while providing polarization isolation between transmit and receive.

Features

- *VSWR 1.2:1 typical*
- *Isolation > 30 dB typical*
- *Full Bandwidth Available*
- *Higher Frequency Units will be Quoted on Request*
- *Available from 12.4 to 220 GHz w/3% or Greater Bandwidth*

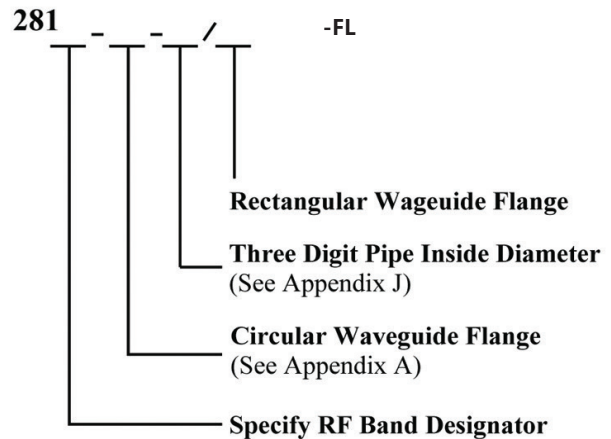
Applications

The 281 Series used primarily in conjunction with the antenna product line, which can be combined with cassegrain, horn lens, or circular horn antennas to provide dual linear orthogonal/dual circular orthogonal polarization.



Consult for current dimensions

Ordering Information



Dimensional Specifications

Model No.	Frequency Band (GHz)	Bandwidth (GHz) ²	A		B		C	
			in.	mm	in.	mm	in.	mm
281K	18.0–26.5	3	1.25	31.8	1.25	31.8	1.25	31.8
281A	26.5–40.0	4	1.25	31.8	1.25	31.8	1.25	31.8
281B	33.0–55.0	4	1.25	31.8	1.25	31.8	1.25	31.8
281U	40.0–60.0	5	1.25	31.8	1.25	31.8	1.25	31.8
281V	50.0–75.0	5	1.25	31.8	1.25	31.8	1.25	31.8
281E	60.0–90.0	5	1.25	31.8	1.25	31.8	1.25	31.8
281W	75.0–100.0	6	1.25	31.8	1.25	31.8	1.25	31.8
281F	90.0–140.0	6	1.25	31.8	1.25	31.8	1.25	31.8
281F	90.0–140.0	90.0–140.0	90.0–140.0	90.0–140.0	90.0–140.0	90.0–140.0	90.0–140.0	90.0–140.0
281F	90.0–140.0	90.0–140.0	90.0–140.0	90.0–140.0	90.0–140.0	90.0–140.0	90.0–140.0	90.0–140.0

Consult for current dimensions

1. Please specify circular waveguide size per appendix. Include both ends.
2. For rectangular straight through, please add a Model No. 284-XXX at time of order.
3. Wider bandwidths are available.