

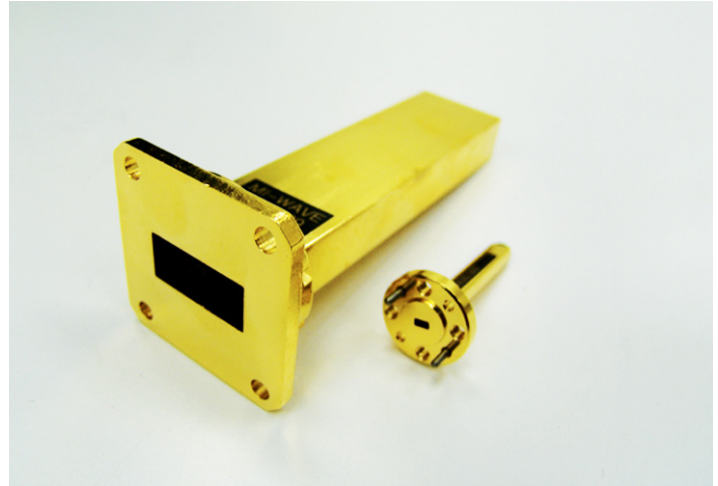
Description

Mi-Wave's 580 Series Terminations are designed with standard waveguide flanges for use from 5 to 320 GHz. Each unit consists of a short length of waveguide and an integral matched terminal load. Individual resistive dielectric loads are tapered to precise wedge configurations for maximum effective energy absorption. The gradual taper provides a low VSWR over the full waveguide bandwidth.

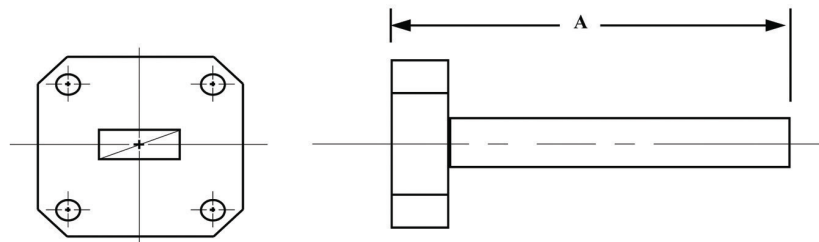
- *Low VSWR*
- *Compact Sizes*
- *Full Waveguide Bandwidths*
- *Available for Low Power and Medium Power Applications*

Applications

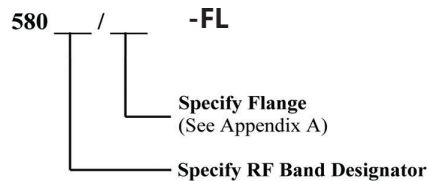
The 580 Series Terminations are used in experimental and developmental test sets where a low VSWR wave-guide load is essential for valid and accurate measurements. These terminations will ensure precise measurement of the VSWR resulting from insertion of various waveguide components into a system.



Dimensional Specifications		
Model No.	A	
	in.	mm
580Ku	3.31	84.1
580K	3.00	76.2
6655	3.00	3.00
580A	2.38	60.5
580B	2.00	50.8
580U	1.75	44.5
580V	1.50	38.1
580E	1.50	38.1
580W	1.50	38.1
580F	0.88	22.4
580D	0.88	22.4
580G	0.88	22.4



Ordering Information



OTHER WAVEGUIDE BANDS AVAILABLE:

WR-137	WR-75
WR-112	WR-51
WR-90	WR-34

Technical Specifications (typical)											
Model No.	580Ku	580K	580A	580B	580U	580V	580E	580W	580F	580D	580G
Frequency Band (GHz)	12.4–18.0	18.0–26.5	26.5–40.0	33.0–50.0	40.0–60.0	50.0–75.0	60.0–90.0	75.0–110.0	90.0–140.0	110.0–170.0	140–220
VSWR (typical)	1.05	1.05	1.05	1.05	1.06	1.06	1.06	1.06	1.10	1.10	1.10
Average Power (Watts)	7.0	6.0	5.0	4.0	2.0	1.0	0.6	0.4	0.2	0.1	0.1

* Available in WR-4, WR-3 & WR-2 Bands