

关注公众号



联系销售

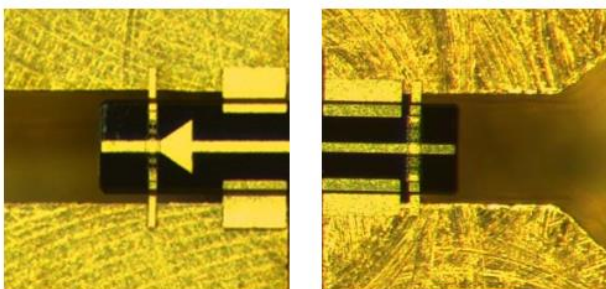
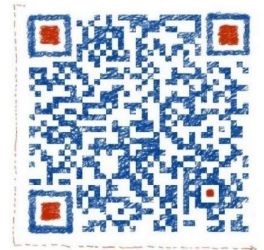


Fig. 1. Internal view of the Schottky frequency doublers at 180 GHz (left) and 360 GHz (right) showing the gold beam-leads.

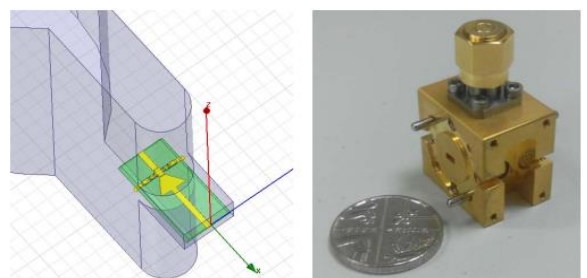


Fig. 1. Circuit model and the assembled frequency doubler block. The GaAs Schottky diode circuit consist of four anodes, each with the following diode parameters; $C_j(0) = 54 \text{ fF}$, $R_s = 5 \text{ } \Omega$ and $V_{br} = 9 \text{ V}$.