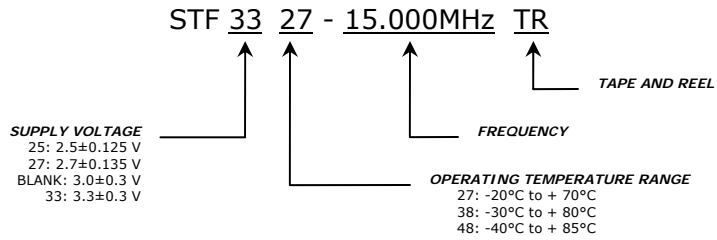


STF SERIES FEATURES

- ±1.5ppm STABILITY
- MINIATURE PACKAGE
- LOW CURRENT CONSUMPTION
- CLIPPED SINE WAVE
- DIGITAL COMPENSATION
- TAPE AND REEL
- RoHS COMPLIANT
- 2.5±0.125V, 2.7±0.135V, 3.0±0.3V OR 3.3±0.3V

PART NUMBERING GUIDE



*FOR CUSTOM PARAMETERS CONTACT YOUR SUNTSU REPRESENTATIVE.
CAGE CODE: 4GUT4

ELECTRICAL SPECIFICATIONS

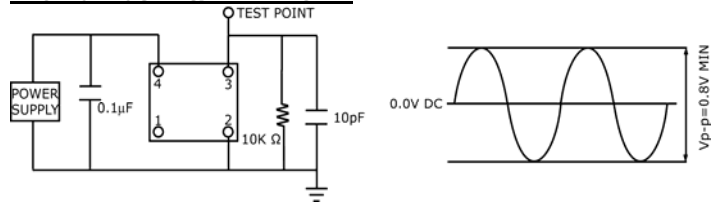
FREQUENCY RANGE:	6.000MHz-40.000MHz
STABILITY (VS. TEMP):	±1.5ppm MAX
STABILITY (VS. AGING):	±1.0ppm/FIRST YEAR MAX
STABILITY (VS. LOAD):	±0.3ppm MAX
STORAGE TEMPERATURE:	-40°C TO 120°C
CURRENT CONSUMPTION:	2mA MAX
LOAD:	10kΩ/10pF±5%
START-UP TIME:	2ms MAX
PHASE NOISE (TYPICAL):	

10Hz OFFSET:	-85dBc/Hz
100Hz OFFSET:	-115dBc/Hz
1kHz OFFSET:	-135dBc/Hz
10kHz OFFSET:	-145dBc/Hz
100kHz OFFSET:	-150dBc/Hz

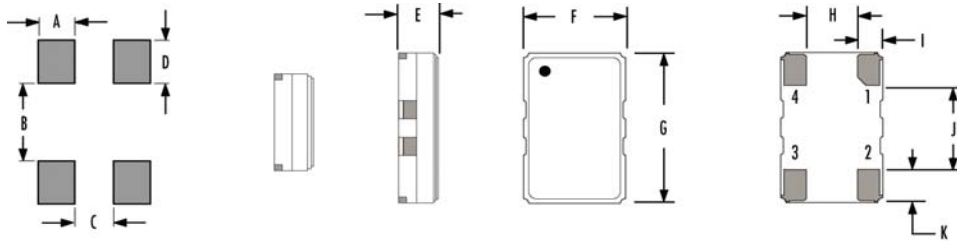
ENVIRONMENTAL & MECHANICAL SPECIFICATIONS

DROP TEST:	FIXED TO 200g, FROM 1.5m (5 CYCLES, 3 AXIS)
MECHANICAL SHOCK:	MIL-STD-883, METHOD 2002, CONDITION B
VIBRATION:	MIL-STD-883, METHOD 2007, CONDITION A
SOLDERABILITY:	230°C, 3s
RESISTANCE TO SOLDERING HEAT:	260°C, 10s
REEL SIZE:	3,000 PIECES

TEST CIRCUIT & WAVEFORM



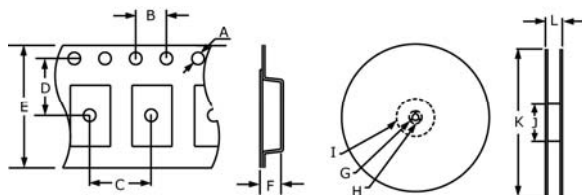
PRODUCT SCHEMATIC



NOTE: DIMENSIONS IN MILLIMETERS (mm); DRAWING NOT TO SCALE

PIN	FUNCTION
1	NO CONNECT
2	CASE GROUND
3	OUTPUT
4	SUPPLY VOLTAGE
DIMENSIONS	
A	1.1
B	2.4
C	1.2
D	1.8
E	1.5±0.1
F	3.20±0.2
G	5.00±0.2
H	1.30±0.1
I	0.85±0.15
J	2.5±0.1
K	1.2±0.1

TAPE AND REEL DIMENSIONS



NOTE: DIMENSIONS IN MILLIMETERS (mm); DRAWING NOT TO SCALE

DIMENSIONS	
A	Φ1.50
B	4.0±0.1
C	8.0±0.1
D	7.5±0.1
E	16.0±0.2
F	2.16±0.1
G	1.5
H	Φ13.0±0.5
I	20.20
J	100.0
K	330
L	18.4±0.2

REFLOW PROFILE

